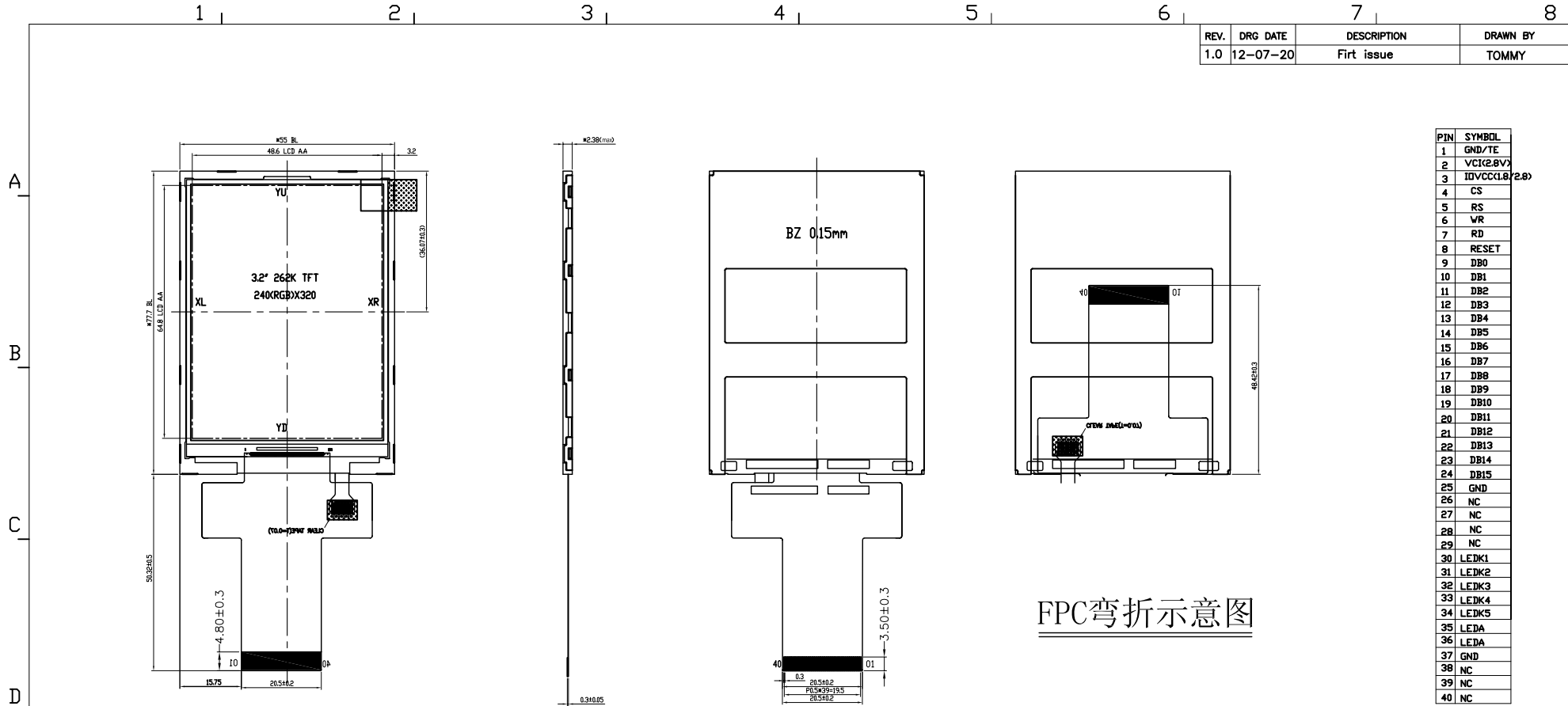


REV.	DRG DATE	DESCRIPTION	DRAWN BY
1.0	12-07-20	Firt issue	TOMMY

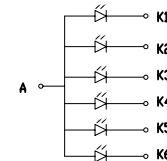


PIN	SYMBOL
1	GND/TE
2	VCC(2.8V)
3	IDVCC(1.8/2.8)
4	CS
5	RS
6	VR
7	RD
8	RESET
9	DB0
10	DB1
11	DB2
12	DB3
13	DB4
14	DB5
15	DB6
16	DB7
17	DB8
18	DB9
19	DB10
20	DB11
21	DB12
22	DB13
23	DB14
24	DB15
25	GND
26	NC
27	NC
28	NC
29	NC
30	LEDK1
31	LEDK2
32	LEDK3
33	LEDK4
34	LEDK5
35	LEDA
36	LEDA
37	GND
38	NC
39	NC
40	NC

Specification:

1. Viewing angle: 6 °clock
2. Display mode: 262K
3. Operating temp: -20°C~+70°C
4. Storage temp: -30°C~+80°C
5. LCD Driver IC: HX8347-G
6. Backlight: 6 chip White LED
7. General Tolerance: ±0.2
8. ROHS Request

注：弯折出货



DRG DATE	12.08.13	TITLE.	LCM OUTLINE	Rocktech Displays Limited			
CHECK	Tommy	MODEL.	RK032JH003	REV.	UNIT	SIZE	(3)
CHECK		DWG No.		1.0	mm	A4	
APPROVE		PAGE	1 OF 1				