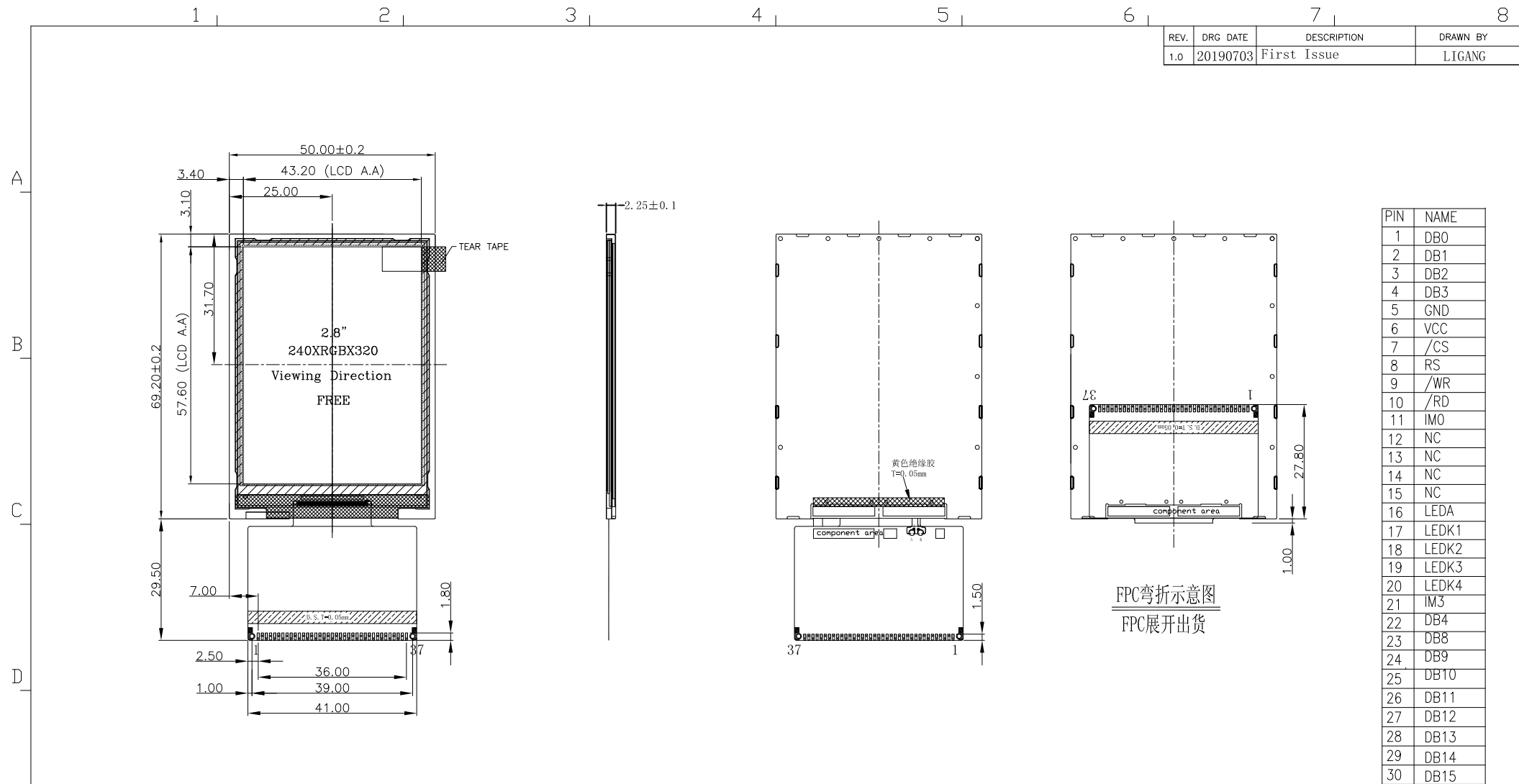


REV.	DRG DATE	DESCRIPTION	DRAWN BY
1.0	20190703	First Issue	LIGANG

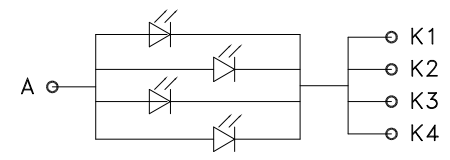


PIN	NAME
1	DB0
2	DB1
3	DB2
4	DB3
5	GND
6	VCC
7	/CS
8	RS
9	/WR
10	/RD
11	IMO
12	NC
13	NC
14	NC
15	NC
16	LEDA
17	LEDK1
18	LEDK2
19	LEDK3
20	LEDK4
21	IM3
22	DB4
23	DB8
24	DB9
25	DB10
26	DB11
27	DB12
28	DB13
29	DB14
30	DB15
31	/RESET
32	VCC
33	IOVCC
34	GND
35	DB5
36	DB6
37	DB7

FPC弯折示意图  
FPC展开出货

Specification:

1. Viewing angle: FREE
2. Display mode: Normally Black
3. Operating temp: -20°C~+60°C
4. Storage temp: -30°C~+70°C
5. LCD Driver IC: ILI9341
6. Backlight: 4 chip White LED, Vf=3.2V, If=80mA
7. General Tolerance: ±0.2
8. ROHS Request
9. Brightness: 500cd/m²



IMO	MCU-INTERFACE MODE	DB PIN USE	
		Register /Content	GRAM
0	180-system 16-bit interface	DB[7:0]	DB[15:0]
1	180-system 8-bit interface	DB[15:8]	DB[15:8]

DRG DATE	19.10.28	TITLE.	LCM OUTLINE	Rocktech Displays Limited		
CHECK	LIGANG	MODEL.	RK028HI105	REV.	UNIT	SIZE
CHECK		DWG No.		1.0	mm	A4
APPROVE		PAGE	1 OF 1	(3)		