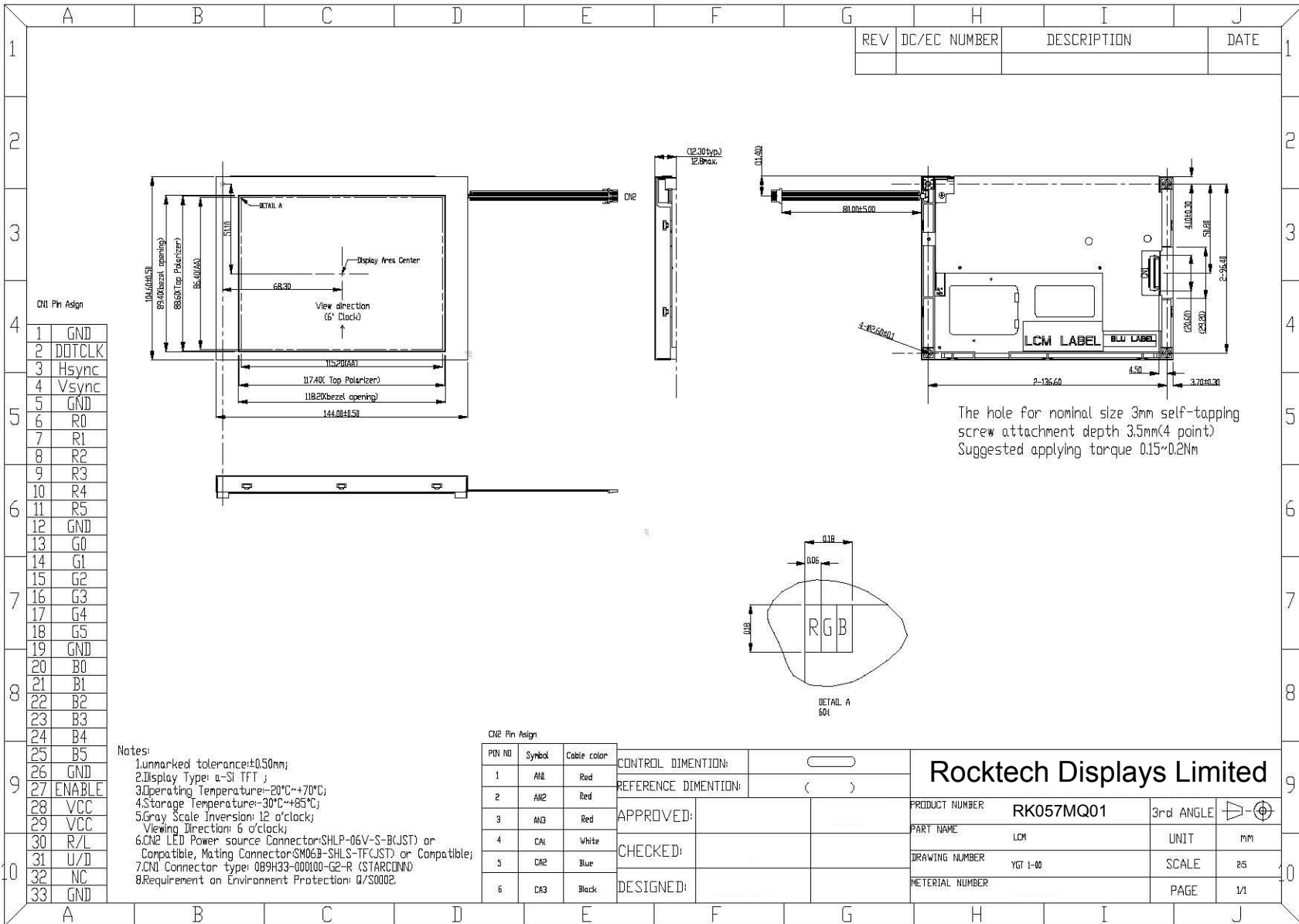


8. Mechanical Drawing



REV	DC/EC NUMBER	DESCRIPTION	DATE

CNI Pin Assign

1	GND
2	DOTCLK
3	Hsync
4	Vsync
5	GND
6	R0
7	R1
8	R2
9	R3
10	R4
11	R5
12	GND
13	G0
14	G1
15	G2
16	G3
17	G4
18	G5
19	GND
20	B0
21	B1
22	B2
23	B3
24	B4
25	B5
26	GND
27	ENABLE
28	VCC
29	VCC
30	R/L
31	U/D
32	NC
33	GND

Notes:

1. Unmarked tolerance: ±0.50mm;
2. Display Type: a-Si TFT;
3. Operating Temperature: -20°C~+70°C;
4. Storage Temperature: -30°C~+85°C;
5. Gray Scale Inversion: 12 o'clock;
6. Viewing Direction: 6 o'clock;
7. CNI LED Power source Connector: SHLP-06V-S-B(JST) or Compatible; Mating Connector: SM06B-SHLS-TF(JST) or Compatible;
8. CNI Connector type: 089H33-000100-G2-R (STARCONIND)
9. Requirement on Environment Protection: 0/S0002.

CNI2 Pin Assign

PIN NO	Symbol	Cable color
1	ANL	Red
2	AW2	Red
3	AW3	Red
4	CA1	White
5	CA2	Blue
6	CA3	Black

CONTROL DIMENTION:	
REFERENCE DIMENTION:	()
APPROVED:	
CHECKED:	
DESIGNED:	

The hole for nominal size 3mm self-tapping screw attachment depth 3.5mm(4 point)
Suggested applying torque 0.15~0.2Nm

Rocktech Displays Limited			
PRODUCT NUMBER	RK057MQ01	3rd ANGLE	
PART NAME	LCM	UNIT	mm
DRAWING NUMBER	YGT 1-00	SCALE	2:5
MATERIAL NUMBER		PAGE	1/1