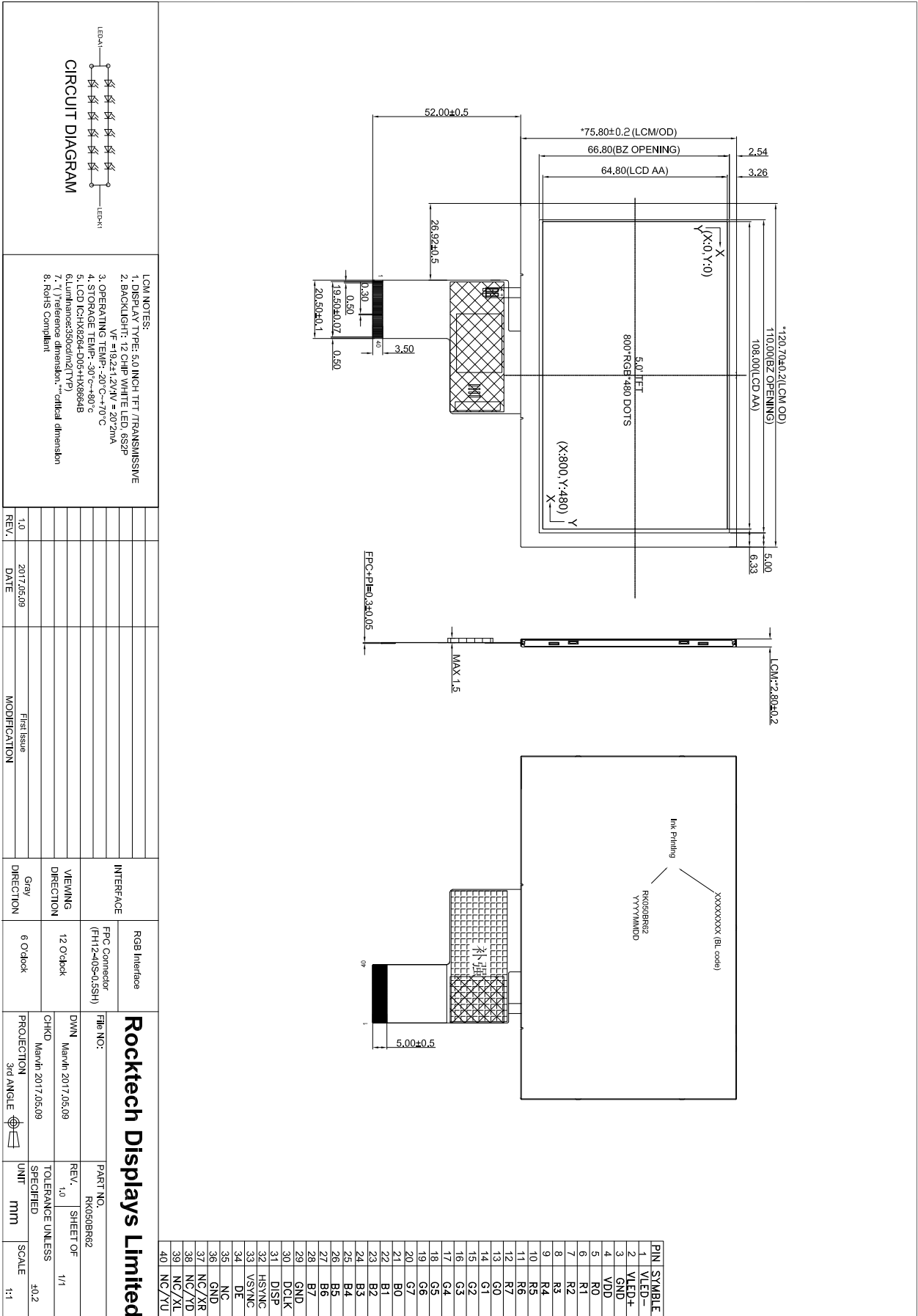


## 8. Outline Dimension



- LCM NOTES:**
1. DISPLAY TYPE: 5.0 INCH TFT / TRANSMISSIVE
  2. BACKLIGHT: 12 CHIP WHITE LED 6S2P  
VF #19.2±1.2, IV = 207mA
  3. OPERATING TEMP: -20°C ~ +70°C
  4. STORAGE TEMP: -30°C ~ +80°C
  5. LCD ICH: X8264-D05-HX8664B
  6. Luminance: 350cd/m<sup>2</sup>(TYP)
  7. "1" reference dimension: "critical dimension"
  8. RoHS Compliant

REV.	DATE	MODIFICATION
1.0	2017.05.09	First Issue

INTERFACE	RGB Interface	VIEWING DIRECTION	PROJECTION
FPC Connector (FH12-40S-0.5SH)	6 O'clock	12 O'clock	3rd ANGLE

**Rocktech Displays Limited**

File NO:	PART NO.	REV.	SHEET OF
DWN March 2017.05.09	RK050BR62	1.0	1/1